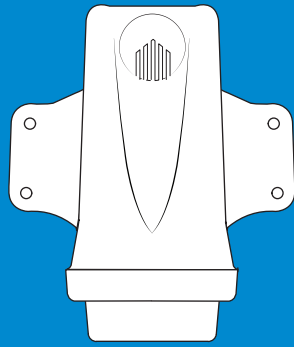


waterwatch.io
info@waterwatch.io

Tel +64 3 477 2779
94B Crawford St
Dunedin, NZ 9016



LS1 UPGRADE GUIDE

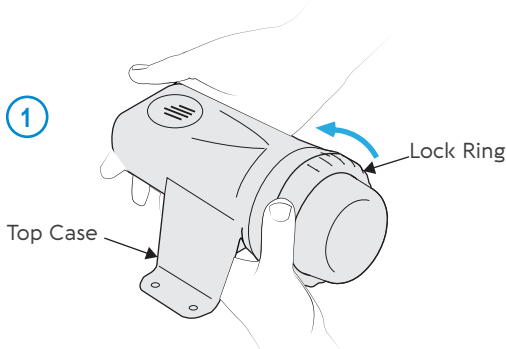


Please handle the exposed circuit board with care when changing the battery.

Avoid touching the electronic components by holding the circuit board on the edges only.

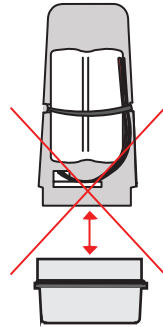
Keep the circuit board from the sensor free of dust and moisture.

1



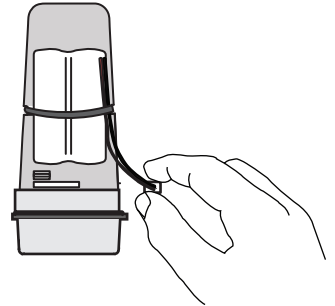
Unscrew the lock ring anti-clockwise. The circuit board, battery and radar can now be removed from the top case.

2



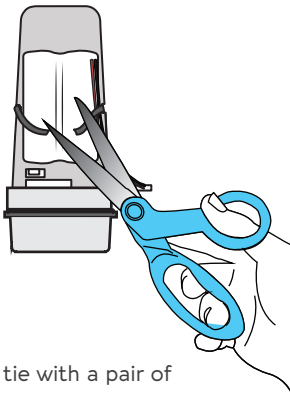
Do not disconnect the circuit board from the radar.

3



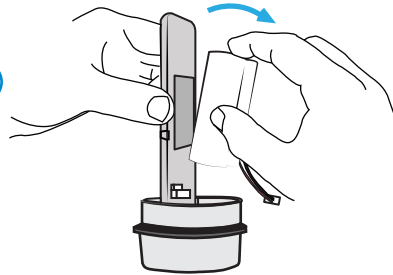
Carefully unplug the battery cable from the circuit board.

4



Cut the zip tie with a pair of scissors and remove. Please ensure that the scissors do not touch the circuit board.

5

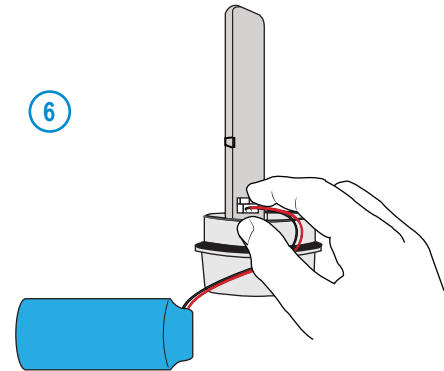


Hold the board firmly on the edges and be careful not to twist the circuit board.

Slowly detach the old battery from the double-sided tape.

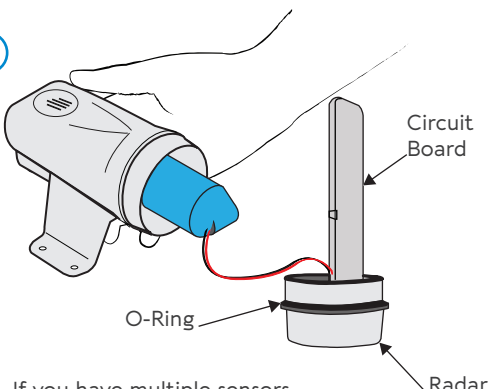
Then remove the double sided tape from the board.

6



Plug the new battery cable into the circuit board.

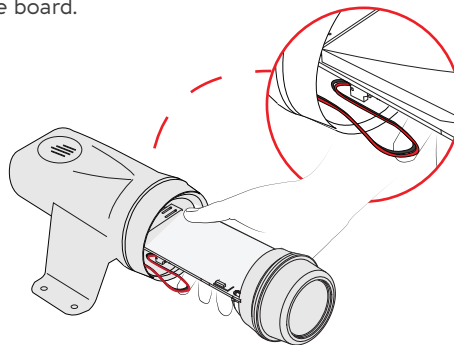
7



If you have multiple sensors, check that the serial number on the new case matches the sensor you are upgrading.

Then place the battery into the cradle in the new case. The battery wires should be on the left side of the cradle.

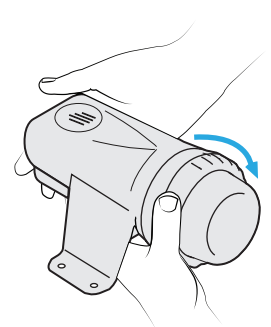
8



Slide the circuit board and radar into the new case over the battery. Push the case and radar together to compress the o-ring.

Keep the wires to the left and be careful not to pinch the battery wires between the circuit board and the new case.

9



Screw the lock ring back on and you're good to go!

Make sure the cover is tightly screwed on to prevent water and dust from damaging your sensor.

When you're all done contact your supplier or info@waterwatch.io and let us know. We will reset your battery level and record that you have completed the upgrade.